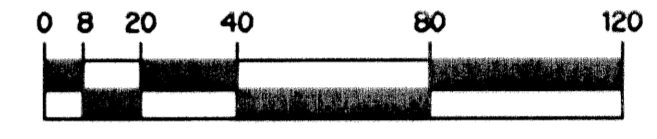
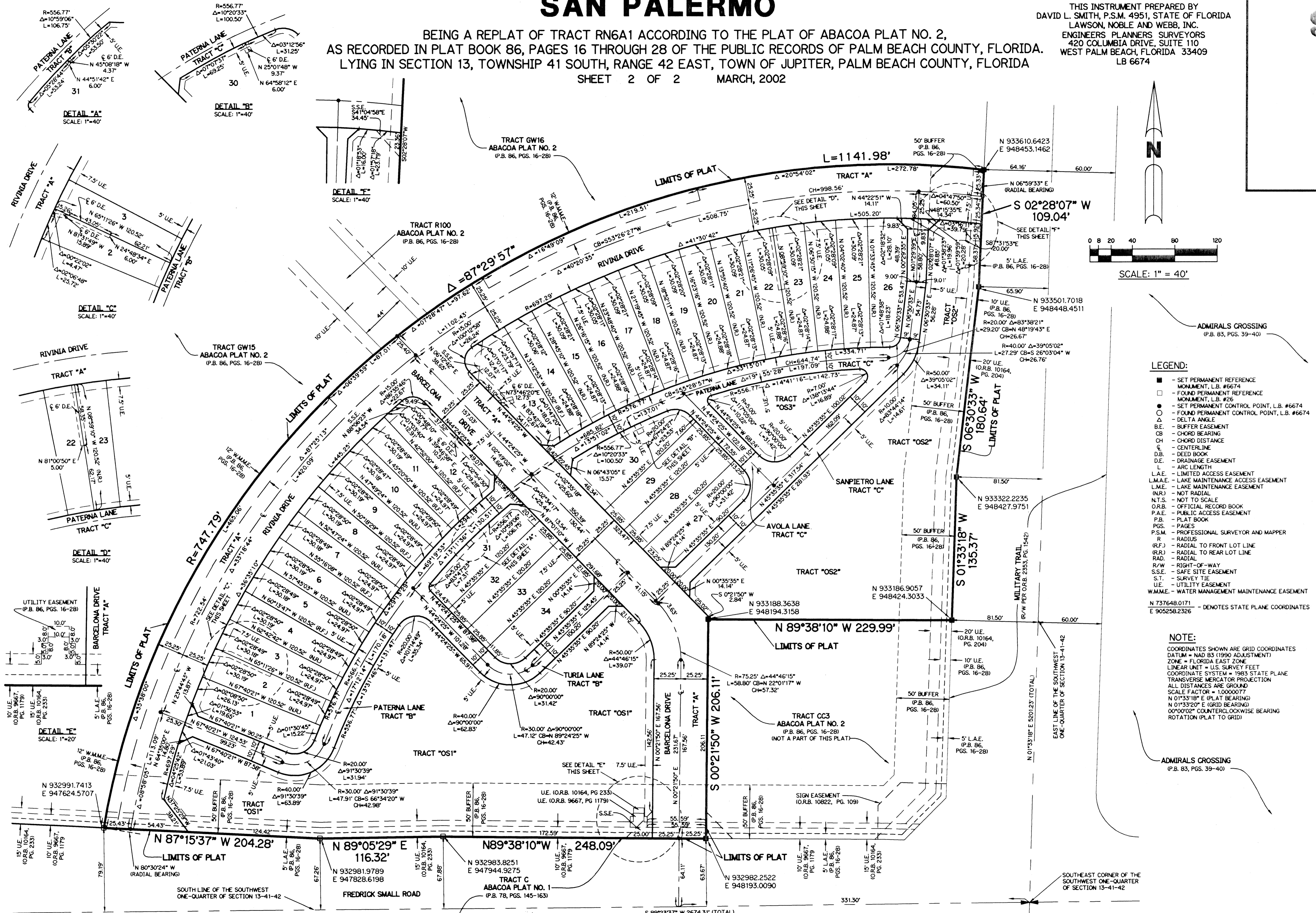


SAN PALERMO

BEING A REPLAT OF TRACT RN6A1 ACCORDING TO THE PLAT OF ABACOA PLAT NO. 2,
AS RECORDED IN PLAT BOOK 86, PAGES 16 THROUGH 28 OF THE PUBLIC RECORDS OF PALM BEACH COUNTY, FLORIDA.
LYING IN SECTION 13, TOWNSHIP 41 SOUTH, RANGE 42 EAST, TOWN OF JUPITER, PALM BEACH COUNTY, FLORIDA
SHEET 2 OF 2 MARCH, 2002

THIS INSTRUMENT PREPARED BY
DAVID L. SMITH, P.S.M. 4951, STATE OF FLORIDA
LAWSON, NOBLE AND WEBB, INC.
ENGINEERS PLANNERS SURVEYORS
420 COLUMBIA DRIVE, SUITE 110
WEST PALM BEACH, FLORIDA 33409
LB 6674

99



SCALE: 1" = 40'

LEGEND:

- - SET PERMANENT REFERENCE MONUMENT, L.B. #6674
- - FOUND PERMANENT REFERENCE MONUMENT, L.B. #26
- - SET PERMANENT CONTROL POINT, L.B. #6674
- - FOUND PERMANENT CONTROL POINT, L.B. #6674
- Δ - DELTA ANGLE
- B.E. - BUFFER EASEMENT
- CB - CHORD BEARING
- CH - CHORD DISTANCE
- CL - CENTERLINE
- D.B. - DEED BOOK
- D.E. - DRAINAGE EASEMENT
- L - ARC LENGTH
- L.A.E. - LIMITED ACCESS EASEMENT
- L.M.A.E. - LAKE MAINTENANCE ACCESS EASEMENT
- L.M.E. - LAKE MAINTENANCE EASEMENT
- (NR) - NOT RADIAL
- N.T.S. - NOT TO SCALE
- O.R.B. - OFFICIAL RECORD BOOK
- P.A.E. - PUBLIC ACCESS EASEMENT
- P.B. - PLAT BOOK
- PGS. - PAGES
- P.S.M. - PROFESSIONAL SURVEYOR AND MAPPER
- R - RADIUS
- (RF) - RADIAL TO FRONT LOT LINE
- (RR) - RADIAL TO REAR LOT LINE
- RAD. - RADIAL
- R/W - RIGHT-OF-WAY
- S.S.E. - SAFE SITE EASEMENT
- S.T. - SURVEY TIE
- UE - UTILITY EASEMENT
- W.M.M.E. - WATER MANAGEMENT MAINTENANCE EASEMENT
- N 737648.0171 E 905258.2326 --- DENOTES STATE PLANE COORDINATES

NOTE:

COORDINATES SHOWN ARE GRID COORDINATES
DATUM = NAD 83 (1990 ADJUSTMENT)
ZONE = FLORIDA EAST ZONE
LINEAR UNIT = U.S. SURVEY FEET
COORDINATE SYSTEM = 1983 STATE PLANE
TRANSVERSE MERCATOR PROJECTION
ALL DISTANCES ARE GROUND
SCALE FACTOR = 1.000077
N 01°33'18" E (PLAT BEARING)
N 01°33'20" E (GRID BEARING)
00°00'00" COUNTERCLOCKWISE BEARING
ROTATION (PLAT TO GRID)

ADMIRALS CROSSING

(P.B. 83, PGS. 39-40)